

# IBM Cloud CLI Quick Reference

## Getting started in the CLI

### Log in to IBM Cloud

```
ibmcloud login
```

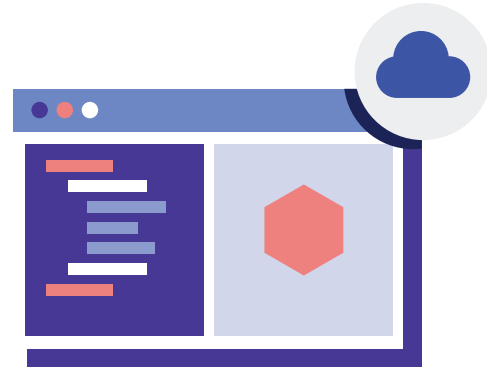
### Target a Cloud Foundry org and space

```
ibmcloud target --cf
```

### Show command help

```
ibmcloud help COMMAND
```

```
ibmcloud help login
```



## Finding and creating resources

### Search the IBM Cloud catalog

```
ibmcloud catalog search QUERY
```

```
ibmcloud catalog search "kube"
```

### View service details (description, plan, location)

```
ibmcloud catalog service NAME
```

```
ibmcloud catalog service containers-kubernetes
```

### Create a resource

```
ibmcloud resource service-instance-create NAME
```

```
SERVICE_NAME PLAN_NAME LOCATION
```

```
ibmcloud resource service-instance-create
```

```
myKubeCluster containers-kubernetes lite us-south
```

## Managing identity and access

### Create an API key for authentication

```
ibmcloud iam api-key-create NAME -d DESCRIPTION
```

```
ibmcloud iam api-key-create MyKey-d "test key"
```

### Assign access to a user by creating an access policy

```
ibmcloud iam user-policy-create USER_NAME
```

```
[OPTIONS]
```

```
ibmcloud iam user-policy-create
```

```
user@example.com --roles Editor
```

### Create an access group to manage access

```
ibmcloud iam access-group-create NAME
```

```
ibmcloud iam access-group-create myAdminGroup
```

## Organizing resources and services

### Create a resource group to organize resources

```
ibmcloud resource group create GROUP_NAME
```

```
ibmcloud resource group create myRG
```

### List service instances in a resource group

```
ibmcloud resource service-instances -g GROUP_NAME
```

```
ibmcloud resource service-instances -g myRG
```

### Create an org to organize Cloud Foundry services

```
ibmcloud account org-create ORG_NAME
```

```
ibmcloud account org-create myCForg
```

### Create a space to organize services in an org

```
ibmcloud account space-create SPACE_NAME
```

```
ibmcloud account space-create myCFspace
```

### Add a tag to a resource

```
ibmcloud resource tag-attach --tag-names TAG
```

```
--resource-name NAME
```

```
ibmcloud resource tag-attach --tag-names
```

```
myTeamTag --resource-name myKubeCluster
```

### List tags in your account

```
ibmcloud resource tags
```

## Managing your account

### Invite a user to your account

```
ibmcloud account user-invite USER_EMAIL
```

```
ibmcloud account user-invite user@example.com
```

### List users in your account (account owner only)

```
ibmcloud account users
```

### View usage costs in your account for a month

```
ibmcloud billing account-usage [-d YYYY-MM]
```

```
ibmcloud billing account-usage -d 2020-01
```

## Extending the CLI with plug-ins

Expand the CLI's capabilities with specialized plug-ins to develop and deploy apps, manage your clusters, and more.

### List all available plug-ins

```
ibmcloud plugin repo-plugins
```

### Install a plug-in

```
ibmcloud plugin install NAME
```

```
ibmcloud plugin install container-service
```

Get the full list of commands and options in the docs: [ibm.biz/cli-docs](https://ibm.biz/cli-docs)

Questions, comments or feedback? Come chat with us in Slack in the #developer-tools channel: [ibm.biz/cli-feedback](https://ibm.biz/cli-feedback)